



dreamsense

smart baby monitor

Instructions for use



Here for you

Taking the stress out of sleep for parents

Sleep is such an important part of our wellbeing, it helps all of us; parent, baby, child, be the best version of ourself and prepare for the day ahead. Sometimes sleep patterns can be challenging and we need a little support to help us sleep better.

That's when it makes sense to count on us.

Questions?

Contact our customer care team on 08085 979 899

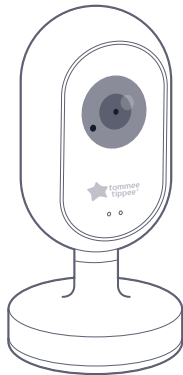
For tips, tricks and troubleshooting,
please visit tommeetippee.com



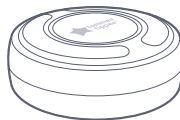
Please download the Tommee Tippee app which is available on Android and iOS app store.

Contents

1. Quick connection guide	2
2. Parts	6
2.1 Baby monitor (camera) overview	6
2.2 Parent pod overview	7
3. Getting started	8
3.1 Power supply and charging	8
3.2 Registration and pairing	8
4. Using your parent pod	9
5. Troubleshooting	10
6. Safety information	12



Baby monitor



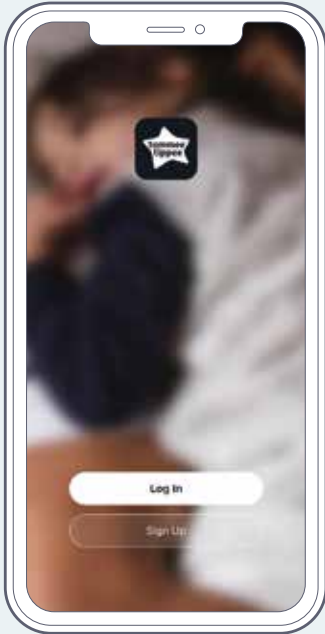
Parent pod

1. Quick connection guide

We recommend you read the 'Getting Started' section from page 8, but if you really can't wait, then this quick connection guide will get you up and running.



Please download the **Tommee Tippee** app which is available on Android and iOS app store.



iOS

Use QR code to download app for iOS device



Android

Use QR code to download app for Android device



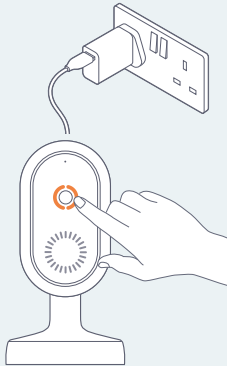
Pairing

Once you've downloaded the Tommee Tippee app and registered your account, pairing is really simple.

Follow the on-screen instructions to pair the device.



Once your account is set up, tap the '+' in the top right corner to add a new baby monitor and follow the on-screen instructions.



Press the power button on the back of the baby monitor. The light will turn orange.

The light will glow white if you've already paired it to an account. Press and hold the power button to pair to a new account.

If it glows red, your internet is down. Check your router and then press and hold for 5 seconds when back online.



Follow the steps in the app to detect your baby monitor.

You will be taken out of the app to select a 'SmartLife' or 'Tommee Tippee' hotspot and may lose connectivity. This is normal.

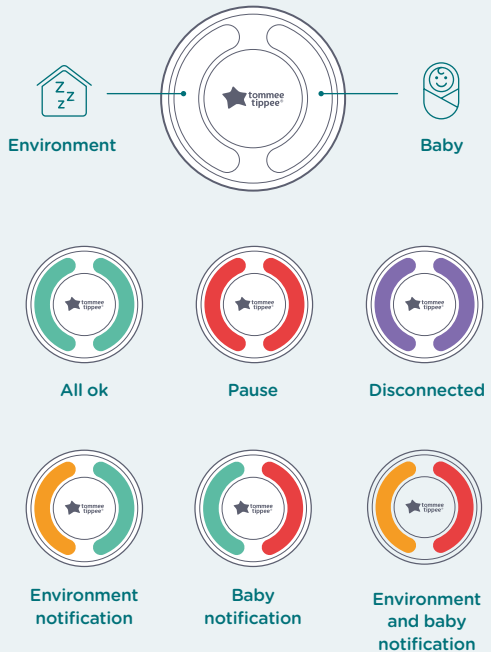


Return to the app to complete the pairing process.

Setting your comfort zones

The parent pod filters what's going on in the nursery so you're only notified of things that matter to you.

To ensure it delivers on that promise, choose your 'comfort zones' as soon as you can. You choose how sensitive each sensor is and how often you're notified of changes through the parent pod.



Setting sleep analysis duration

Next, you need to input when bedtime begins and ends on a typical night. This will determine when the sleep analysis runs from and to, allowing you to understand events, baby behaviours and sleep trends.

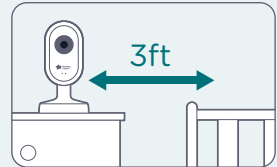


Drag the slider to define bedtime and wake time.

We know your little one might have other ideas but we set a 'bedtime' and 'wake time' so you can track trends over time.



Once you've set your sleep analysis duration, you'll see insights on the sleep tracker pages including environmental changes and whether they disturbed your baby.



Finally, ensure the baby monitor and cable are more than 3ft from the cot and that's it...

You're ready to go!

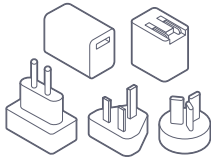
2. Parts

2.1 Baby monitor (camera) overview

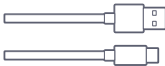
The baby monitor can be placed on any flat surface and offers a high definition, wide-angle view of your baby's sleeping environment.

It includes night vision and senses everything that's going on in the background – sound, humidity, temperature and light. It's even clever enough to know the difference between a car horn outside and your baby crying in their cot.

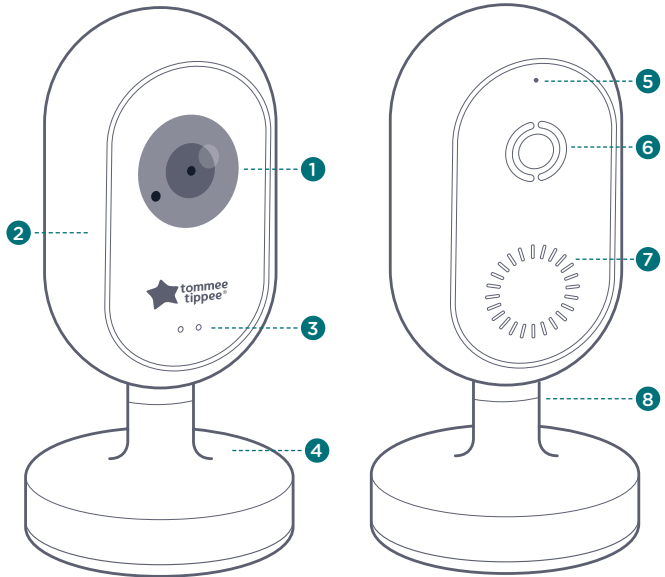
1. 1080p camera and sensors
2. Tilt axis
3. Baby microphone
4. Shelf mount
5. Environment microphone
6. Power and status
7. Speaker
8. Twist axis



Multi-region power adaptor plug



2.5m USB-C power cable

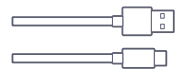
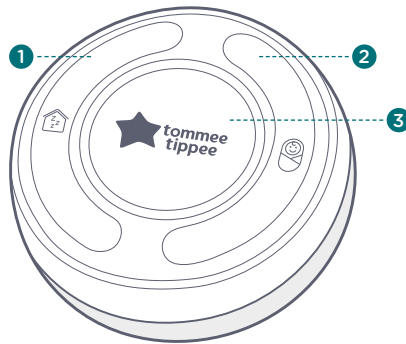


2.2 Parent pod overview

The parent pod is designed to notify you when there's a disturbance, whether that be your baby making a noise or a change in their sleeping environment. It uses coloured light and sound to catch your attention. As you can adjust the sensitivity of these notifications within the settings section of your app, you can be notified only when you want to be. When notified you can then open the app to learn more about the disturbance, before deciding whether you want to take any action.

The baby monitor and parent pod can be used 'offline' as an effective sound monitor but we recommend pairing to the Tommee Tippee app to benefit from video monitoring, two-way talk, snapshot, disturbance tracking and customisation of the comfort zones.

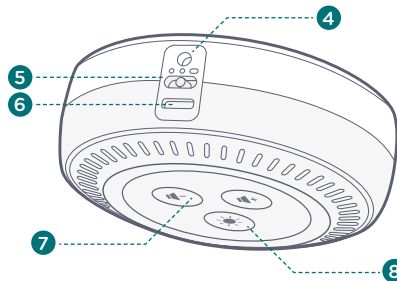
1. Background state change indicator light
2. Baby state change indicator light
3. Pause notifications
4. Power light
5. 3-way switch
off / day mode / night mode
6. Charging port
7. Volume adjustment
8. Brightness adjustment



1.2m USB-C charging cable

Day and night mode option.

In day mode, green illumination means everything is ok but in night mode, when there's no illumination, that means everything is ok. We've done that so the green light doesn't disturb your sleep.

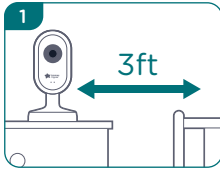


3. Getting started

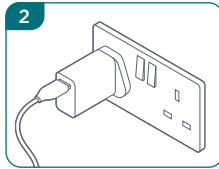
3.1 Power supply and charging

The baby monitor is a USB-powered device that needs to be plugged in to work. Please ensure all parts of the unit, including the wire, are more than 3ft from the baby's cot at all times.

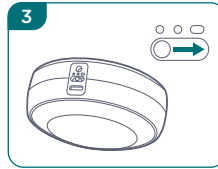
The parent pod is a rechargeable device that holds charge for around 6 hours. It can be used whilst charging or unplugged. Please plug in the parent pod to charge for 4 hours prior to/during first use.



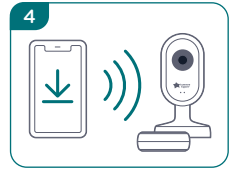
Place baby monitor on flat surface more than 3ft from cot.



Plug in baby monitor (camera).



Turn parent pod on by sliding the switch to day or night mode.



Download app and pair device ready to use.

3.2 Registration and pairing

The Tommee Tippee smart app allows you to control all app-enabled Tommee Tippee products in one convenient place. On your smartphone, search for the free Tommee Tippee smart app now or scan the QR code (see page 2)

1. Open the app. Create an account if this is your first app-enabled Tommee Tippee product or login if you already have one.
2. Follow the steps in the app to validate your e-mail address. We ask for this as an additional security measure.
3. Once your account is set up, tap the '+' icon to add a new device, following the on-screen instructions.
4. You'll be asked to power on the baby monitor. Ensure the light on the back of the unit is solid orange during pairing. It will turn solid white when connected.

4. Using your parent pod

As your parent pod distinguishes between 'baby' and 'environment', it helps inform you when you might want to go to your baby or not. For example, if there's a change in the environment but baby is still fast asleep, you might decide to make no changes. If baby is crying you might intervene quicker.

As well as acting as an effective sound monitor, it uses coloured light to notify you of status changes that are outside your (in-app-defined) 'comfort zones'.

There are 5 states:



All ok

Both sides show green*

Baby is quiet and all environmental factors (light, temperature, humidity) are within your pre-defined comfort zones.



Baby notification

Baby indicator shows red

Baby is restless and making noises above your comfort zone e.g. crying.



Environment notification

Environment indicator shows orange

An environmental change has fallen outside your comfort zone e.g. too cold in the room.



Pause

Both sides show red

Pressing the middle button temporarily pauses all notifications, allowing you to go into the nursery to settle or feed your baby. Press the button again to un-pause.



Disconnected

Both sides show purple

Baby monitor is turned off, out of range (more than 80m away) or the parent pod is still trying to find it.

* In night mode, the green light is turned off, encouraging you to concentrate on your own sleep, knowing you'll be notified if anything goes outside of your comfort zones.

5. Troubleshooting

We suggest pairing your baby monitor with the Tommee Tippee smart app to benefit from the latest firmware version for your devices and for the latest features.

Can't find the app?

Search Tommee Tippee smart app to find it in the App Store.

Can't connect?

Please ensure you are connecting via the 2.4GHz channel on your wi-fi router. Follow router instructions for use to ensure that option is available to you prior to connecting.

Can't hear baby through the parent pod?

The volume level on the parent pod may be set too low. Press the '+' button on the underside of the parent pod. Alternatively, the parent pod may be too far away from the baby monitor (maximum distance 80m). Reduce the distance between the baby monitor and the parent pod.

Both sides of the parent pod are lit up?

Your baby is making noise and the environment they are in is outside of your comfort zones. Check on baby and if all is well, check your settings in the app to increase your comfort zone.

Hearing feedback through the parent pod or phone?

If the volume settings are high and you are close to the baby monitor, you may hear high-pitched feedback. This is common with baby monitors. To avoid it, press pause on your parent pod or mute on your phone when you're near the baby monitor and the sound will stop. Alternatively, move away from the baby monitor.

How does the tracking page work?

The tracking page is designed to help you optimise your baby's sleep environment, whatever that may be. By showing the background changes and baby changes next to each other on the same timeline, you can see whether a change in the background state may have affected your baby's sleeping patterns. In other words, did the room get lighter, louder, hotter or colder that caused your baby to wake and if so, can you change anything to improve their next sleep.

What do the sensitivity levels mean?

The baby monitor measures everything but you can choose what you want to be notified of. If you know you live in a particularly light environment, it is probably unhelpful to be notified of it all the time. On the sensitivity screens, you can slide the toggle to the left so that it isn't tracked. Alternatively, you may want to ensure your child's sleep environment never drops below a certain temperature and therefore adjust the sensitivity to match your lowest acceptable level.

How do I know if the parent pod is out of charge?

The parent pod includes a power indicator light above the Type-C USB port. This shines white when charging, green when charged and red when the battery level drops below 25%.

Why isn't my tracking page working?

To use the sleep tracking functionality, you'll need to set your sleep analysis duration in the comfort zones page on the settings screen. Choose a bedtime and a wake time in order to analyse your baby's sleep during that period. We know your little one might not stick to these times but it allows you to compare one night to the next to find patterns.

Does the charging of the parent pod take longer if in use?

Charging may take longer if the parent pod is turned on while charging. The parent pod charge is shown above the camera feed in the app.

Why does the light on the back of the baby monitor turn off?

After 40 minutes of inactivity, the light on the back of the baby monitor will turn off so as not to distract baby. It is still on and monitoring. To check, press the button and the light will re-illuminate.

How long does it take to charge the parent pod?

It takes 4 hours to fully charge the parent pod. When fully charged, the parent pod has a 6 hour run time so you can have it with you around the house.

6. Safety information

Important warnings

Please read and retain the instruction guide for future reference as it includes important information.




WARNING — Children have STRANGLED in cords. Keep cords out of the reach of children (more than 3 ft (0.9 m) away).


Adult use only – Keep all components out of the reach of children. Do not allow a child to play with it – It is not a toy.

Please remember that your Tommee Tippee baby monitor is not a medical device, nor a device to prevent a case of Sudden Infant Death Syndrome (SIDS) or ‘cot death’, and you should not rely on it for a baby’s well-being. The baby monitor has been designed to give you added reassurance for those times when you cannot be in the same room as your baby, it is not a substitute for proper adult supervision. You should personally check your baby as frequently as necessary.

- It is important that an adult stays within range of the monitor at all times during use.
- Never place the baby monitor in the baby’s cot.
- Do not place furniture or other obstructions on the adaptor cords and be sure to position them so that nobody can trip over them.

- Do not operate if there is any damage to the appliance or the cord.
- Ensure cord isn’t twisted or caught behind furniture as this can cause weakness in the cable.
- Do not use with an extension cord.
- Keep adaptor cords away from hot surfaces such as radiators and central heating pipes.
- Be careful not to position the adaptor where a child might try to step on it.
- Please note that the adaptors become warm in use – this is quite normal and not a hazard.
- Use the power adaptor provided.
- This product is only to be connected to Class II Equipment bearing the following symbol: 
- Only plugs that are approved to BS1363 should be used (UK only).
- Only use this product on a stable and level surface.
- Make sure you store your monitor in a safe place when not in use, away from heat and water.
- Do not submerge in water.
- Take care not to drop either unit as this may affect the functioning of your monitor.
- Do not attempt to remove, replace or repair the battery from this product.
- The disconnected device should remain readily operable when not plugged into the mains power supply.

Technical Information

- Model: 1195
- Input: 5V \approx 1.5A
- Battery Type: Built-in lithium-ion battery
- Voltage: 3.7 V \approx
- Battery Capacity: 1350 mAh
- Parent Unit Frequency Band: 2402MHz - 2480MHz
- Baby Monitor Frequency Band: 2402MHz - 2480MHz
- Parent Unit Max Output Power: 7.5W (38.75dBm)
- Baby Monitor Max Output Power: 7.5W (38.75dBm)
- Class of Protection: 

Regulatory Information



Information on the Disposal of Waste Electrical and Electronic Equipment (WEEE)

This symbol means that your product shall be disposed of separately from household waste in accordance with local laws and regulations. When this product is ready for disposal, take it to a collection point designated by local authorities. Separating and recycling of your product at the time of disposal will help conserve natural resources and ensure that the product is recycled in a manner that protects human health and the environment. Penalties may be applicable for the incorrect disposal of this product in accordance with national legislation.


This product contains a battery which is permanently built into the product for safety and performance reasons. The battery should not require replacement during the lifetime of the product. It should only be removed by skilled service personnel. Dispose of this product as electrical waste to ensure the correct waste treatment of the battery.

RED Declaration

Mayborn (UK) Limited hereby declares that this product is in compliance with the essential requirements and other relevant provisions of Directive 2014/53/EU and all other applicable EU directive requirements. The complete declaration of conformity can be found at: www.tommeetippee.com/en-gb/product-support

Made in China



 Only use the power supply listed in the user instructions.

Power supply adaptor.

Manufacturer: Shenzhen MerryKing Electronics Co., Ltd.

Model no: MKC-0502000VEXCU

Model identifier: MKC-0502000VEXCU. Input voltage: 100-240V, Input AC frequency: 50-60Hz, Output voltage: 5VDC, Output current: 2A, Output power: 10W, Average active efficiency: 78.7%, No-load power consumption: 0.1W

Mayborn Group: Mayborn (UK) Limited, Mayborn House, Balliol Business Park, Newcastle upon Tyne, NE12 8EW
England Registered number 01894022.

All IP rights held by Mayborn (UK) Limited and/or its affiliates. TOMMEE TIPPEE®. Copyright © 2022.
Patent pending.

Mayborn (UK) Ltd
Mayborn House
Balliol Business Park
Newcastle Upon Tyne
NE12 8EW
UNITED KINGDOM

EU Representative
Mayborn France Sarl
56 Rue de paris,
Boulogne Billancourt,
92100
FRANCE

Mayborn ANZ Pty Ltd.
(ABN 66 154 703 134)
PO Box 475,
Mt Waverley
VIC 3149
AUSTRALIA

Newborn Brands (NZ) Ltd.
PO Box 47-677
Ponsonby
Auckland
1144
NEW ZEALAND

Let us know what you think

We'd love to hear what you think of our smart baby monitor. Share your photos, reviews and tell us about your experiences on our social channels.



Any questions?
Visit our website: [tommeetippee.com](https://www.tommeetippee.com)